



# Conservation District News

July 2016

107 Park Street - Farmington, ME 04938

[info@franklinswcd.org](mailto:info@franklinswcd.org) [www.franklinswcd.org](http://www.franklinswcd.org)

Office: 778-4279 Cell: 212-6109

Volume XXI ~ Issue II



All programs and services of the Franklin County Soil & Water are offered on a nondiscriminatory basis.  
Making Conservation Work For You

## In This Issue

- March 11<sup>th</sup> Annual Public Auction
- March 15<sup>th</sup> Septic system installation workshop
- March 22<sup>nd</sup> Natural resource assessment
- March 23<sup>rd</sup> Invasive Forest Pest workshop
- April 6<sup>th</sup> Pond Construction & Maintenance Workshop
- April 8<sup>th</sup> Annual meeting with robotics presentation
- May 8<sup>th</sup> Brook & Rainbow trout program pick up
- May 12<sup>th</sup> Southwestern Regional Envirothon
- May - Sept: Big Tree Contest

## Coming Events

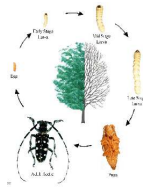
- Aug 19<sup>th</sup> NRCS 2017 EQIP application funding deadline
- Aug 26<sup>th</sup> Supervisor elections legal notice in paper  
For one appointed & one elected position
- Sept 19<sup>th</sup> Ag Day for K - 4<sup>th</sup> graders: presenters & volunteers welcome
- Sept 24<sup>th</sup> Wilton watershed survey
- Oct. 20<sup>th</sup> Erosion & Sediment Control Workshop
- Completion of Natural Resource Assessment grant
- Completion of Forest Pest Outreach grant



Emerald Ash Borer



Woolly Adelgid



Asian Longhorn Beetle



Browntail moth



Winter moth

## Supervisors

Henry Hardy, Chair  
Pamela Harnden, Vice-Chair  
Patty Cormier, Treasurer  
L. Herbert York, Secretary  
Bruce Tracy, Member

## Associate Supervisors

Linton Robinson  
Robert Leso  
Ellie Hopkins  
Archie Berry  
Frank Forster  
Scot Bubier  
 .....



Black Acres Farm in Wilton honored as cooperators of the year.

Group picture with all who have and/or still assist this farm.

Amanda Burton, Jade Gianforte, Paul Hersey, Gary Raymond, Russell, Susan, & James Black Patty Cormier, Rosetta White, & Robert Leso.

## USDA Personnel - Farmington Field Office

Amanda Burton - NRCS District Conservationist 778-4767 x105  
 Jade Gianforte - NRCS Soil Conservationist 778-4767 x108  
 Gary Raymond - FSA County Exec. Director 778-2788 x102  
 Tina Penley - FSA Program Technician 778-2788 x100

The mission of Franklin County Soil & Water Conservation District is to address the voluntary conservation of natural resources for all citizens by providing technical assistance and educational programming.

## Public Auction Benefits Education



This past March 11<sup>th</sup> Franklin County Soil & Water Conservation District held its 19<sup>th</sup> public fund raising auction to benefit their environmental and agricultural education programs.

This year's auction drew over 50 people to bid on over 130 items. Those attending spent about \$4,300 to help support education. The largest of these programs is Agricultural and Environmental Day at the Fair (Ag Day). Thank you, Adrian Harris for auctioning the items.

A big round of applause goes out to all out donors including: Atwood's Greenhouse & Maple syrup, Bangor Savings Bank, Basil's Pizza & Subs, Black Acres, Carrabasset Coffee Company, Arkay Pizza, Barbara's Handpainted Slates, Saws, Bovins Harvest House, Cobbossee Colony Golf Course, Bowley Brook, Brent Surowiec, Calzolaio Pasta Co, Longfellow', The Oxford Casino's Grill, Cousineau Inc, Calico Patch, UMF Fitness Center, Cristi DeMarco, Dave's Appliance, David Fuller, Calico Patch, Carol & Kenny Lempke, Clearwater Veterinary Hospital, Deer Farm Camps, Doug Dunlap, Stanley Museum, Dr Troy Norton, Dutch Treat, Earl Hardy, Don's Stove Shop, Creative Wooden Products, Edmunds Market, Enchanted, Falls Veterinary Hospital, Farmington House of Pizza, Davco, Farmington Ski Club, Four Seasons Café, Dave Karkos, River Run Farm, Maple Valley Farms, Foss Family Farm, Day Mtn. Maple Products, Good Times Unlimited, The Herbert Hotel, Ecopelagicon Nature Store, Franklin County Ag Society, Front Street Merchantile, Gooley's-Conifers Unlimited, Amanda Dow-Smith, Hair Designs Unlimited, Forster-Ricardo Farm, Hammond Lumber, Hammond Tractor Co, Full Bloom Hydroponics, Jack Mills, Java Joe's, Glenn's Country Woodcrafts, Hight Chevrolet, Goings Electric, Homestead Restaurant, Imelda's Fabrics, Joyce Dubay, Lakewood Theatre, Living Acres, Jim Meldrum, KFC, Maine Wood Pellets, Madore's, Mosher's Meat & Seafood, Mainestone Jewelry, Mary Ellen Edgerly, The Blue Orchid, LaFleur's Restaurant, Lotus Blossom Restaurant, Maine Wood Concepts, Motor Supply, Mt Blue Motel (Colonel), Poetry in Pigment, Narrow Gauge Cinema, North Country River, Riverside Greenhouse, Pike's Strawberries, Stevenson's Strawberries, Northern Outdoors, Chuck Wagon Restaurant, The Gingerbread House, The Coplin Dinner House, Pine Tree Turkey Farm, Soup For You, SignWorks, Springbrook Golf Club, Silver Valley Farm, Wilhelm Reich Museum, Valley Gas & Oil Co., White Water Farm, Stan Keirstead, Sunrise View Farm, Tamra Wight, West Mount, Mixed Up, Kathleen Randall, DEW Animal Farm, Farmington Vet Clinic, Sandy River Cash Fuel, The Franklin Journal, CN Brown, The Kingfield Woodsman, Wilson Lake Inn, Logger's Den, Tranten's Family Market, Dead River Company, Twice Sold Books, W A Mitchell, Farmington Vet Clinic, Johnny's Selected Seeds, Fixit Farm, and Nancy's Sweet Relish.

## 67 Years and Still Serving

The Franklin County Soil & Water Conservation District held its 67<sup>th</sup> annual meeting on Friday, April 8, 2016 with over 50 people attending. The evening started with a small silent auction, social gathering, and viewing of the invasive forest pest display. Henry Hardy District Chairperson introduced our Commissioner Walter Whitcomb, State Representative Russell Black, and District supervisors who were present along with the USDA and District Staff.

Commissioner Whitcomb updated the audience about what is going on in Augusta with the combined departments of Agriculture, Conservation, and Forestry and what people should see for changes during 2016.



Whitcomb announced that the Department was hiring MACD Executive Director, Tom Gordon full time effective April 19<sup>th</sup>. A letter from the District to the Department was read thanking the Commissioner, his staff and the department for all that they have done for the Soil & Water Conservation Districts over the last 20 years. A cake was then cut and served.



Rob Taylor received State recognition from Representative Black.

Pamela Harnden, on behalf of the Board of Supervisors, presented Rob Taylor of Spruce Mountain School with the 2015 Educator of the Year award. Rob has been honored many times for his dedication to his students and for connecting the students and the community. Thank you Rob, for your dedication.

Black Acres Farm owned and operated by Russell, Susan, and James Black was selected by the District as the 2015 Cooperators of the Year and honored by both the District and the Maine government for their hard work. They have been installing conservation practices both in the woodlot and on the farm and have used NRCS as their long-term partner.

The high bidder silent auction items were announced and a brief break was taken for people to pay for their items.

The evening gradually came to an end after Rick Kersbergen gave a presentation on robotics on dairy farms in Norway.



This talk and presentation was quite interesting and made people wonder if this could work in Maine. p2



## Workshops and Sessions Continue to Draw an Audience

In March and April, the Soil & Water Conservation District hosted A septic system installers workshop in New Sharon. The March 15<sup>th</sup> session drew 47 participants out on a very nasty travel day to listen to instructors Glenn Angell, State Site Evaluator and David Rocque, Maine State Soil Scientist. Topics covered included: Revisions to the SSWWD Rules adopted in 2015, Erosion/sediment control (what, where, when and who), what causes failures and how to avoid them, inspections which can hold up things, the interchangeability of disposal field devices, installer liability, reading and understanding the HHE-200 Form, how water moves into and through the soil, septic system hydrology issues, fill extension retaining walls, backfill specifications and history, installing septic system force mains through wetlands, force main stream crossings, septic system related well contamination case studies, Natural Resources Protection Act and Mandatory Shoreland Zoning issues.

### Natural Resource Assessment

Tom Gordon, MACD Exec. Director, drove to Farmington on March 22 for our local Natural Resource Assessment meeting at UMF. Tom served as facilitator while the audience of seven Franklin County residents worked to set priorities for the County for the next few years. The areas identified in this county along with the related issues are listed on page 4. A copy of the Natural Resource Assessment should be available by the end of Sept. 2016.



### Pond Construction & Maintenance Workshop

Candi Gilpatric, USDA Natural Resources Conservation Service agricultural engineer and Bobby VanRiper, Maine Inland Fisheries and Wildlife biologist, served as our very knowledgeable specialists at the April 6<sup>th</sup> workshop at the Farmington Town Office.



Almost 20 individuals came to learn how to clean up their existing pond or to learn how to go about installing a new pond. Every year there are individuals who stay long after the program is over to get their additional specific questions answered.

Some of the participants came for contractor credits which was offered for the first time to those who stay for 4.5 hrs.

### Erosion & Sediment Control Workshop

**October 20, 2016 8a.m. - 4:15 p.m.**  
**Strong Town Office- 14 South Main Street**

If you are still in need of the training to become certified or to get re-certification credits, the Maine Department of Environmental Protection and the Franklin County Soil & Water Conservation District urge you to attend our training session in Erosion & Sediment Control Practices in October.

By attending this session, you qualify to be DEP certified in erosion and sediment control practices after the completion of a site evaluation. You will also learn about new state-of-the-art erosion control techniques and ways to save time and money on your construction projects as well as become eligible for discounts, expedited DEP permitting and other free educational resources. Look for the registration form on page 5.

### *Forest Pest Outreach Grant Workshop*

A workshop was held at UMF on March 23<sup>rd</sup> to help educate the public along with road crew members and foresters about the invasive pests in and near Maine. Both pesticide and certified forester credits were offered for attending this session. Joseph Dembeck, Somerset County SWCD Exec. Director ran this session. Packets filled with important information and a "Forest Trees of Maine" booklet were given out to the twenty-two participants that showed up.

Joe told the group what invasive insect/pests are what makes them an invasive species and how to manage for them. He talked about the Asian longhorn beetle, emerald ash borer, and wooly adelgid, among other bothersome species. Maps were looked at to show where the different invasive pests are currently found. There was a discussion about the harm invasive pests cause to the environment and to people.

# Areas and Issues Identified at the Workshop and in the Natural Resource Assessment Surveys

## Cropland:

Issue 1: Agricultural soil health management.

Issue 2: Loss of cropland due to stream bank erosion and flooding along rivers and streams within Franklin County especially along the Sandy River. No progress has been made on this issue since the last Natural Resource Assessment in 2011.

Issue 3: Lack of markets to sell agricultural products.

Issue 4: Lack of winter cover contributes to poorer soil health and results in more soil erosion.

Issue 5: Nutrient imbalances causing changes in the soil phosphorus levels on fields that have a long history of being fertilized with chicken manure causing excessive levels of nutrients such as phosphorous.

## Hay/Pasture:

Issue 1: Prevention and/or eradication of bedstraw and other invasive plants was the highest priority issue identified at the public meeting.

Issue 2: Historic cost of the maintenance of fields results in loss of fertility and harvesting opportunities. Inability on the part of some hayland owners/operators to fertilize or lime fields to maintain adequate fertility to make harvesting of hay economical.

Issue 3: Imbalance of nutrients due to excessive manure applied.

Issue 4: Shortages of hay and lack of uses/markets of second-quality hay.

Issue 5: Odor nuisance complaints associated with spreading poultry manure on hayland.

## Forestry:

Issue 1: Invasive plants such as Japanese knotweed, bittersweet, barberry, autumn olive, and honeysuckle out-compete native species. Invasive plants are a particular concern on reverting fields where active agricultural management has ceased.

Issue 2: Lack of markets for wood is affecting use of best management practices. The markets for pulpwood and biomass energy have declined rapidly. Loggers are facing economic pressures to stay afloat and are harvesting everything possible to maintain cash flow. As a result, good forestry management practices are not being used consistently. Stream water quality can be affected by poor harvesting practices.

Issue 3: Biomass harvesting is a method of cutting on forest land in which the entire tree is removed from the site, with only the stump remaining. Every part of the tree, from trunk to branch tips, is used. Also, small, previously pre-commercial stems have value. Traditional products such as sawlogs, veneer, pulpwood, and firewood are pulled from the main stem. The tops, branches, and twigs, and even leaves are chipped, then burned for energy.

Concerns with this harvest method include the following:

- Nutrient depletion of the forest floor as debris is not left to rot and breakdown over time
- diminished supply of traditional forest products such as pallet logs, pulpwood, and firewood
- the impact on the forest landscape of the heavy/large equipment used

Issue 4: Small streams and brooks are impacted by harvesting activities and other forest management activities. Some problems are siltation, change of water temperature due to lack of shade, stream blockage, stream bank erosion, and a general change in stream quality.

## Water Resources

Issue 1: Nonpoint source pollution (NPS), [pollution caused by runoff that is not from a point source such as a pipe] from agriculture, forestry and urban landscapes pollutes waterways.

The 2011 Natural Resource Assessment also identified the following problems/issues with water resources:

Issue 2: Porter Lake (Strong and New Vineyard) where beach erosion is caused by importing beach gravel and the proliferation of gravel roads.

Issue 3: Algae growth in Toothaker Pond is difficult to control.

Issue 4: Shoreland erosion at Webb Lake.

## Wildlife Resources:

Issue 1: Lack of clarification of what is happening with the Sandy River being included as part of the salmon restoration program is of concern to landowners who are not sure what impact the Endangered Species Act will have on property use.

Issue 2: Fish passage barriers created by the Walton Dam in West Farmington and Kingfield dam.

Issue 3: Challenge of maintaining adequate early successional habitat for woodcock, ruffed grouse and grassland bird species.

Issue 4: There is diminishing wintering habitat area for deer and a lack of criteria for best practice guidance for Deer Wintering Areas.

Issue 5: Farmers and landowners' problems with nuisance animals.

## Southwestern Envirothon Winners

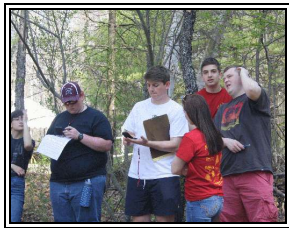


On May 12<sup>th</sup> Oxford County Soil & Water hosted the Southwestern Regional at the Roberts Farm in Norway with Androscoggin Valley, Franklin, and York County SWCDs helping for the day.

Nineteen teams competed for one of the top four positions and the chance to compete at the MACD State finals on May 26<sup>th</sup> at MOFGA.



Testing in soils pit.



Forestry questions include "How tall is this tree?".



Identifying aquatic organisms.

Spruce Mountain's team two took 1<sup>st</sup> place with a huge lead over the rest of the teams scoring almost 452 points. The 2<sup>nd</sup> place team was Spruce Mountain team 4 with a score of 334.23. A new team from Richmond took 3<sup>rd</sup> place with 320.64 and Spruce mtn. Team 1 was 4<sup>th</sup> place with 319.15 and their team 3 took 5<sup>th</sup> place. Due to this year's rules of only two teams per school going to States, 6<sup>th</sup> place team Dirigo with 298.84 pts was given the chance to go on.

Only ten teams competed at the MACD State competition. Jay's Spruce Mtn. team #2 scored 425.84 pts to take first place. It was very exciting to see Richmond take 2<sup>nd</sup> place with a score of 365.65. Belfast finished 3<sup>rd</sup> with 360.92 pts.

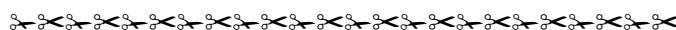


Spruce Mtn (20th) at 2015 North American competition.

Jay's team will now go to the 2016 North American Envirothon in Peterborough, Ontario, Canada July 24<sup>th</sup> - July 29<sup>th</sup>. This year's current issue is "Invasive Species: A Challenge to the Environment, Economy and Society".

## Open Farm Day - July 24<sup>th</sup>

[maine.gov/dacf/ard/market\\_promotion/docs/OPEN%20FARM%20DAY%20HANDOUT%202016%20Final%206.3.pdf](http://maine.gov/dacf/ard/market_promotion/docs/OPEN%20FARM%20DAY%20HANDOUT%202016%20Final%206.3.pdf)



## Beginning Farmer Workshop July 30<sup>th</sup>

Aldermere Farm, Rockport [Call K-LSWCD at 596-2040]

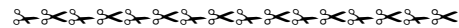


## Trout Program

Twenty-seven different individuals purchased 1014 brook trout and 1116 rainbow trout which were delivered at our May 8<sup>th</sup> pick up.

Some of these individuals also ordered either Clear Pond to eliminate algae growth in their ponds or trout feed for their fish. Unfortunately for those who called or came in later, the hatchery only brought exactly what was ordered for feed and Clear Pond.

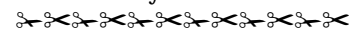
If you are interested in stocking your pond in 2017, send us any mailing address changes you might have to FCSWCD, 107 Park St - Farmington 04938.



## Supervisor Positions

This year there are two supervisor positions that need to be filled. There is one elected position and one appointed position. Anyone who wishes to run must get twenty-five signatures on a FCSWCD petition form between Aug 26<sup>th</sup> and Sept. 29, 2016. Anyone interested in the appointed position will need to get a written recommendation from a current board member to be submitted to the board for approval and submission to the DACF for final decision and appointment. All positions are for a three year term.

Associate supervisors are accepted at any time during the year but usually start in January at the first meeting of the board for the new calendar year.



## Big Tree Contest

The big tree contest will continue in Franklin County until the end of Sept. The only Franklin County state winners listed in 2009-2010: American basswood 224" cir., 85' tall in Strong, boxelder 115" cir. 85' tall in Wilton, and red pine 88" cir. 96' tall in Weld. Do you have or know of trees like this anywhere in

Franklin County? Please submit an entry.

For participating farm near you go to:

## Maine Farm Days - Misty Meadows Farm

Aug 24<sup>th</sup>-25<sup>th</sup> in Clinton open to the public.