



Forest Pest Workshop

Hosted by Franklin County SWCD

March 23, 2016

Wilton Town Office Conference Room
158 Weld Rd (Rte 156)

Presented by Joseph Dembeck, Executive Director - Somerset County SWCD
and Patty Cormier, District Forester - Maine Forest Service

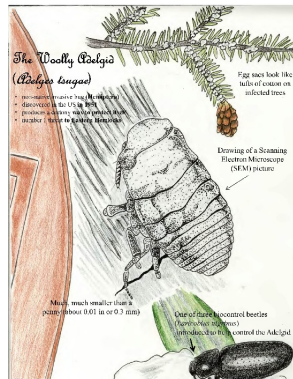
9:00 Introduction to Forest Pest Project
MACD/ME DACF Partnership

9:05 What are Invasive Species?
Definition
Pathways of Invasion
Monitoring and Management

9:15 Hemlock Woolly Adelgid and Hemlock Scale

History of Invasion
Pathways of Invasion

Id & Lifecycle
Signs & Symptoms
Management Options



9:35 Winter Moth
History of Invasion
Pathways of Invasion
Id & Lifecycle
Signs & Symptoms
Management Options



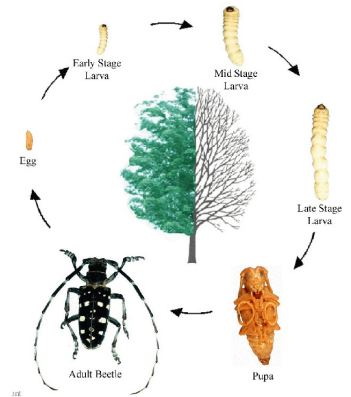
9:45 Browntail Moth
History of Invasion
Pathways of Invasion
Id & Lifecycle
Signs & Symptoms
Management Options



9:55 Asian Longhorned Beetle

History of Invasion
Pathways of Invasion

Id & Lifecycle
Signs & Symptoms
Management Options



10:10 Emerald Ash Borer

History of Invasion
Pathways of Invasion

Id & Lifecycle
Signs & Symptoms
Management Options



10:25 Reporting Potential Invasions
Additional Resources
Discussion/Questions

Franklin County SWCD 107 Park St - Farmington, ME 04938 (questions call 778-4279)

Name: _____ Representing _____

E-Mail: _____ cell: _____ Phone: _____

Mailing Address: _____

City & Zip: _____

"This material is made possible through a grant from the Maine Department of Agriculture, Conservation and Forestry (DACF) and is funded in part by a Cooperative Agreement from the United States Department of Agriculture's (USDA) Animal and Plant Health Inspection Service. The USDA, the DACF, MACD, and the FCSWCD are equal opportunity providers and employers."